

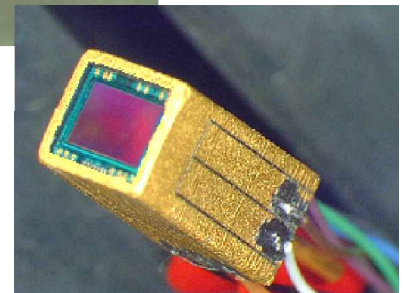
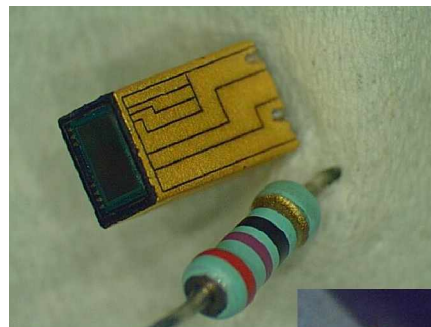


Color CCD MicroCamera Head 1/6"

SMCC06048

Features:

- Extremely miniaturized color CCD camera (3.8 * 3.8 * 8.74 mm)
- Light Weight (0.27 g)
- Long length cables driving capability
- Qualified for harsh environment
- High resolution (Ye, Cy, Mg and G complementary color mosaic filters)
- High sensitivity and low smear
- No voltage adjustment (Reset Gate and substrate bias are not adjusted)
- Low dark current
- Excellent anti blooming characteristics
- Continuous variable-speed shutter
- Field period readout system
- Variable charge-storage time electronic shutter
- Recommended range of exit pupil distance : -10 mm to -∞



General Description:

The 3D-μCamera is a highly miniaturized, light weight, high performance and easy-to-use color CCD Camera for endoscopes applications.

It embeds state-of-the art Sony color CCD sensors with high resolution and sensitivity, low smear and dark current, and excellent anti blooming characteristics.

The embedded electronics grant the μcamera with a long cables driving capability : up to 10 meters of cable can be connected between the camera head and the base station (20 meters cable can be connected on specific demand).

It is available for PAL and NTSC video systems.

The μcamera is packaged through 3D PLUS MCM-V technology qualified for harsh environment applications (vibrations, mechanical shocks, thermal, humidity).

A DSP controlled Electronic Board can be connected to the camera head and is providing the user with all the μcamera settings and control functions like color, brightness, contrast, image window set-up, ...

Ordering Information:

Part number	Video Format	Cable Length
SMCC06048	P : PAL N : NTSC	-

Between 2.0 and 9.9 meters : **XX** => X.X meters
 After 10 meters : **A0** : 10 meters **A1** : 11 meters **A2** : 12 meters
A3 : 13 meters **A4** : 14 meters **A5** : 15 meters
A6 : 16 meters **A7** : 17 meters **A8** : 18 meters
A9 : 19 meters **B0** : 20 meters

3D Plus do not provide any optical system (lens or filter) with this product.

Flyer MicroCamera 1/6"



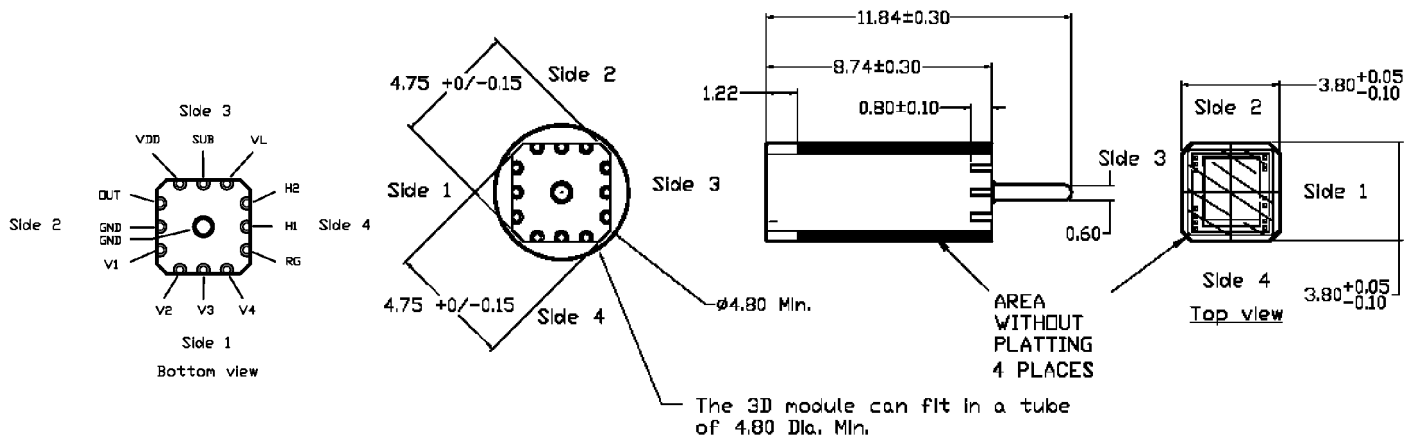
Color CCD MicroCamera Head 1/6"

SMCC06048

Technical features:

Features		
Video System	PAL	NTSC
Image Sensor	Interline 1/6" CCD (440.000 pixel)	
Active Pixel	3.275 μm (H) * 3.150 μm (V)	3.200 μm (H) * 3.725 μm (V)
Active Image Area	2.46 mm * 1.83 mm	2.46 mm * 1.84 mm
Resolution	752 (H) * 582 (V)	768 (H) * 494 (V)
Power Supply	+15V, -7.5V (+/- 3%)	+15V, -7.5V (+/- 3%)
Environment		
Temperature (storage)	-30°C / +80 °C	
Temperature (operating)	- 10 °C / +60°C	
Relative humidity	10 to 90 % non condensing	
Sterilization	Camera head and cable can be immersed in a disinfecting solution.	
Dimensions		
Dimensions	3.8 * 3.8 * 8.74 mm	
Weight	0.27 g.	

Mechanical drawing and Pin assignment:



References:

- SONY CCD Image Sensor ICX239AKE (PAL video system) data sheet referenced E98X20B0Y-PS
- SONY CCD Image Sensor ICX238AKE (NTSC video system) data sheet referenced E98X19B0Y-PS

Main Sales Office:

FRANCE	3D PLUS 641, rue Hélène Boucher ZI. 78532 BUC Cedex	Tel : 33 (0)1 30 83 26 50	Fax : 33 (0)1 39 56 25 89	Web : www.3d-plus.com e-mail : sales@3d-plus.com
North America	3 D PLUS USA, Inc. 2570 Eldorado Parkway, Suite 150 McKinney, TX 75070	Tel : (1) 214 733-8505	Tel : (1) 214733-8506	e-mail : jquinn@3d-plususa.com